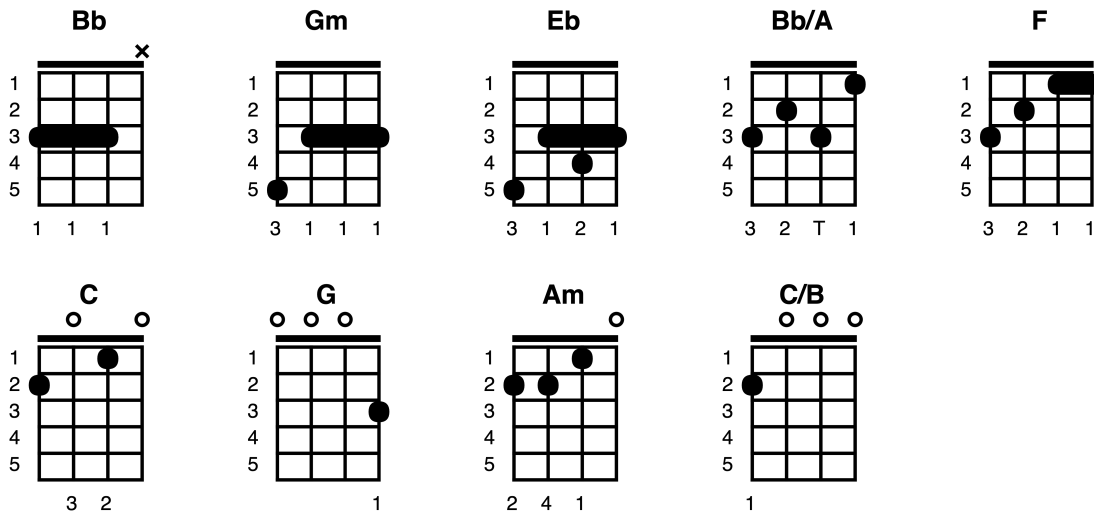


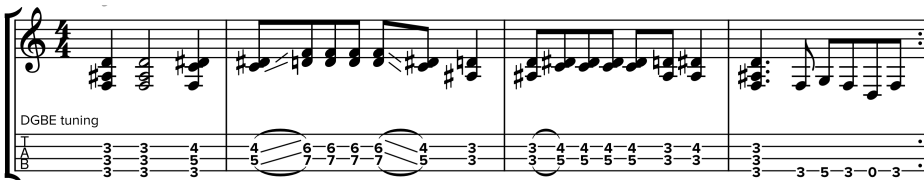
Lodi (baritone)

Key of Bb

Creedence Clearwater Revival, 1969



Strum pattern: duxuduxu duxuduxu



Intro (Opening riff) X2

[Bb]//// **[Gm]**//// **[Eb]**//// **[Bb]**////

It was **[Bb]** just about a year a-**[Gm]**go,
 I **[Eb]** set out on the **[Bb]** road
 Seeking my **[Bb/A]** fame and **[Gm]** fortune,
[Eb] looking for a pot of **[F]** gold
 Well **[Bb]** things got **[Bb/A]** bad and **[Gm]** things got worse
 I **[Eb]** guess you know the **[Bb]** tune
 Oh Lord, I'm **[F]** stuck in Lodi a-**[Eb]**gain **[Bb]**

I **[Bb]** rode in on the **[Gm]** Greyhound,
 but I'll be **[Eb]**walking out if I **[Bb]** go
 I was just **[Bb/A]** passing **[Gm]** through,
 must be **[Eb]** seven months or **[F]** more
 I **[Bb]** ran out of **[Bb/A]** time and **[Gm]** money,
[Eb] looks like they took my **[Bb]** friends
 Oh Lord, I'm **[F]** stuck in Lodi a-**[Eb]**gain **[Bb]**

Repeat opening riff X2

[Bb]//// [Gm]//// [Eb]//// [Bb]////

The [Bb]man from the maga-[Gm]zine
[Eb] said I was on my [Bb] way
Somewhere I [Bb/A] lost con-[Gm]nections,
I [Eb] ran out of songs to [F] play
I [Bb] came into [Bb/A] town, a [Gm] one-night stand
[Eb] Looks like my plans fell [Bb] through
Oh Lord, I'm [F] stuck in Lodi a-[Eb]gain [Bb]

KEY CHANGE

[F]//// [C]//// [G]////
[C]//// [C] ////

[C] If only I had a [Am]dollar
for [F] every song I've [C] sung
Every [C/B] time I [Am] had to play,
while [F] people sat there [G] drunk
You [C] know I'd [C/B] catch the [Am] next [C]train,
[F] back to where I [C] live
[C] Oh Lord, I'm [G] stuck in Lodi a-[F]gain
[C] Oh Lord, I'm [G] stuck in Lodi a-[F]gain

Outro X2

[C]//// [Am]//// [F]//// [C]////

Arranged for baritone ukulele by Damon's Baritone Uke Joint

<https://www.youtube.com/watch?v=BJqolaGDSPQ>